



# AOD-9604

## WHAT IS AOD-9604?



### → AOD (Anti Obesity Drug)

Fragment of GH (growth hormone) peptide shown to have lipid reducing effects, similar to but more effective than GH on account of it not having adverse side effects of unmodified GH. AOD can regulate fat metabolism by stimulating lipolysis while inhibiting lipogenesis both in laboratory testing and in humans and animals. Recent studies also demonstrate that AOD possesses regenerative properties associated with growth hormones. There are currently trials underway to show the application of AOD in osteoarthritis, hypercholesterolemia, as well as bone and Cartilage repair.

## DOSING?



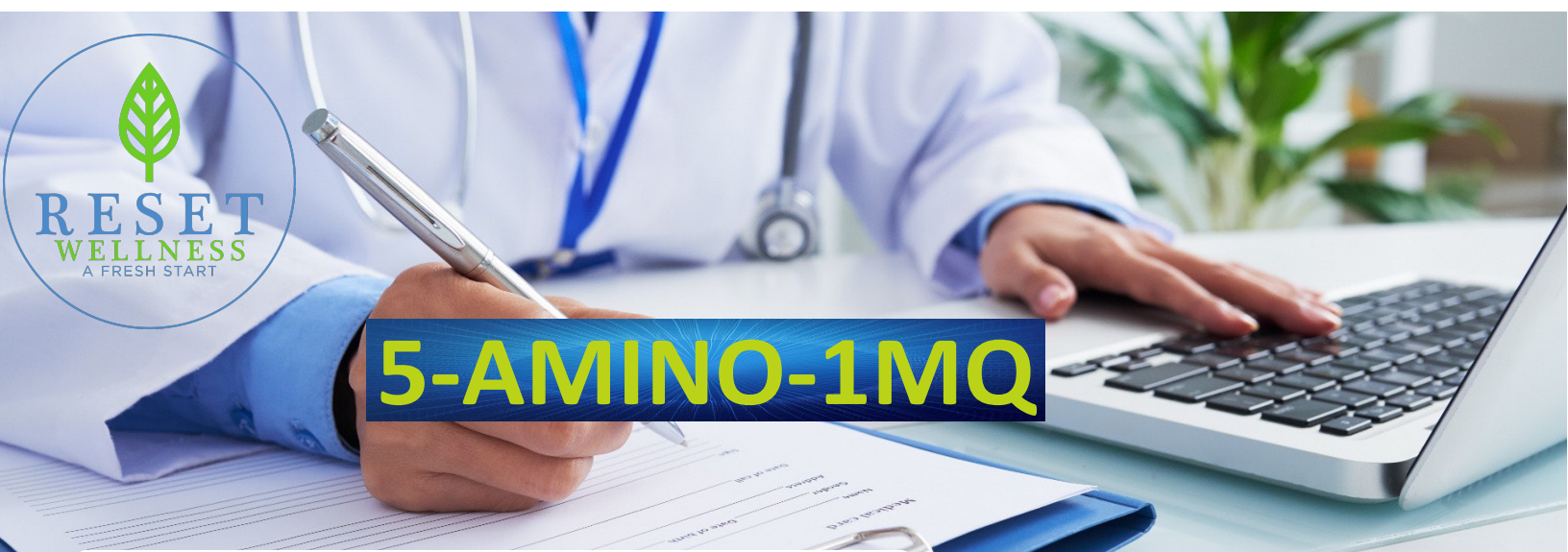
### → AOD 9604: 500mcg troche

Take by mouth once daily, dissolve between the cheek and gum

## BENEFITS OF AOD-9604?



- ❖ Stimulates bone differentiation and mineralization in adipose-derived mesenchymal stem cells (MSC)
- ❖ Promotes myoblast differentiation
- ❖ Stimulates stem cell differentiation toward bone, muscle, and cartilage repair
- ❖ Promotes myoblast differentiation



# 5-AMINO-1MQ

## WHAT IS 5-AMINO-1MQ? +

5-Amino-1MQ (5-amino-1-methylquinolinium) is a small, selective molecule that has gained attention for its potential to enhance fat loss and improve metabolic health. It primarily works by inhibiting an enzyme called NNMT (nicotinamide N-methyltransferase), which plays a role in fat storage and metabolic function.

## DOSING? +

Take 1 tablet by mouth daily.

## ADVERSE EFFECTS? +

Fairly new- limited data

Interactions with metabolic or hormonal systems, but no major adverse effects have been consistently reported

## BENEFITS OF 5-AMINO-1MQ +

FAT LOSS

INCREASED ENERGY LEVELS

IMPROVED INSULIN SENSITIVITY

MUSCLE PRESERVATION

ANTI-AGING

**\*\* GREAT ADJUNCT  
WITH GLP-1 THERAPY \*\***

# BPC-157

## WHAT IS BPC 157? +

BPC-157 (Body Protection Compound-157) is a peptide first derived from gastric juices.

BPC-157 is most often used to treat stomach and intestinal conditions such as inflamed intestinal epithelium (leaky gut), eosinophilic esophagitis, and inflammatory bowel disease; however, its abilities to improve type 1 collagen and increase blood flow via angiogenesis means it can be a powerful peptide for wound healing and overall tissue regeneration following injuries.

## POTENTIAL SIDE EFFECTS? +

- Injection site reactions
- Nausea
- Edema
- Rash

## BENEFITS OF BPC-157? +

- Helps heal tissues
- Neuroprotective
- Gastroprotective
- Promotes Wound Healing
- Speeds Up Tissue Regeneration
- Reduces Inflammation
- Increases Blood Flow (stimulates NO (nitric oxide))
- Relieves Joint Pain
- Boosts Immune Function
- Improves Muscle Strength and Endurance

## General Wellness Dosing

### 01 BPC-157 4mg/mL (5mL MDV)

Inject 15 Units SubQ once daily

### 02 BPC-157 500mcg Oral Capsules

Take 1 capsule po daily

## AVAILABLE DOSAGE FORMS:

01 BPC 157 4mg/ml (5mL MDV)

02 BPC 157 500mcg Oral Capsules



# CJC1295/IPAMORELIN

## WHAT IS CJC 1295/IPAMORELIN?



- CJC 1295 is a growth hormone releasing hormone (GHRH) analogue = Growth hormone mimetic
- Stimulates pituitary endogenous GH (growth hormone)
- Increases endogenous IGF-1 (insulin-like growth factor-1)

## BENEFITS OF CJC 1295/IPAMORELIN?



- Improved physical performance
- Increased muscle mass
- Weight loss support
- Thermogenic - fat burning
- Improved recovery from exercise and injury
- Increased bone density
- Cardiovascular support
- Improved sex drive
- Neuroprotection
- Improved cognition and memory
- Used for burns or significant soft-tissue injury, post surgery
- Improves Growth Hormone levels w/ minimal effects on ghrelin, prolactin, ACTH and cortisol
- Increases IGF-1
- Energy levels also seem to be improved when using the combination.
- Helps promote deep wave REM sleep

## POTENTIAL SIDE EFFECTS?



Flushing	Edema
Injection site reaction	Joint and
Rash	Muscle Pain

## WARNINGS:



- CJC1295/Ipamorelin should not be used while pregnant or breastfeeding. Always tell your physician about all medications and supplements, especially corticosteroids and thyroid medications, that you are taking.
- Growth Hormone may be mitogenic; if patient prone to cancer or has cancer, use with caution
- Growth Hormone may mask symptoms of hypothyroidism

## DOSAGE

01

Dosage Amount: CJC-1295/Ipamorelin 2mg-2mg/mL (5mL MDV)

Inject 10units SubQ at bedtime 5 nights weekly on an empty stomach



**DIHEXA**

## WHAT IS DIHEXA?

Dihexa is a promising nootropic and neurogenic peptide with significant potential for enhancing cognitive function, memory, and neural repair. It promotes neurogenesis, mimics BDNF, and helps repair brain damage, making it a candidate for treating Alzheimer's disease, Parkinson's disease, and other neurodegenerative conditions. Dihexa is also being explored as a nootropic for cognitive enhancement in healthy individuals.

## BENEFITS OF DIHEXA

- Cognitive Enhancement
- Neuroprotection and repair
- Enhanced learning and memory
- Potential for treating Neurodegenerative DX
- Non-toxic and minimal side effects

**DOSING: (20mg Oral Caps)** Take 20mg daily

## ADVERSE EFFECTS?

- Reported safe in recommended doses*
- Nervousness*
- Irritability*



# GHK-Cu (Copper Peptide)

## WHAT IS GHK-Cu?



GHK-Cu is a human plasma copper-binding peptide with a wide assortment of biological activities that appear to counter age-associated metabolic imbalances and health conditions. Copper is required for more than a dozen vital enzymes in the human body and skin including those that participate in connective tissue formation, antioxidant defense and cellular respiration.

## POTENTIAL SIDE EFFECTS?

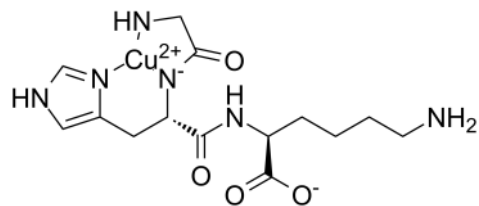


- Injection site reactions
- Monitor for zinc/copper imbalance, recommend patient to take OTC zinc supplement daily

## BENEFITS OF GHK-Cu?



- Anti-aging Support
- Skin Regeneration
- Improves Skin Elasticity
- UV Protection
- Hair Growth/Re-Growth
- Anti-Inflammatory
- Neuroprotective
- Cognitive/Neurodegeneration Support
- Stimulates Wound Healing
- Increases Hair Growth, Thickness & Hair Follicle Size



### Anti-Aging Dosing

**GHK-Cu 10mg/mL (5mL MDV)**

Inject 15 Units SubQ Daily for 20 days/month

### Topical Anti Wrinkle Cream

**GHK-Cu 0.5% Biopeptide Cream**

Apply 1-2 pumps to face every evening

### Hair Re-Growth Foam

**GHK-Cu 0.5%/Biotin 0.5% Scalp Foam**

Apply 2-3 pumps to scalp daily

### AVAILABLE DOSAGE FORMS:

GHK-Cu 10mg/mL (5mL MDV)

GHK-Cu 0.5% Biopeptide Cream (30g)

GHK-Cu 0.5%/Biotin 0.5% Scalp Foam (30g)



# IGF-LR3 PEPTIDE

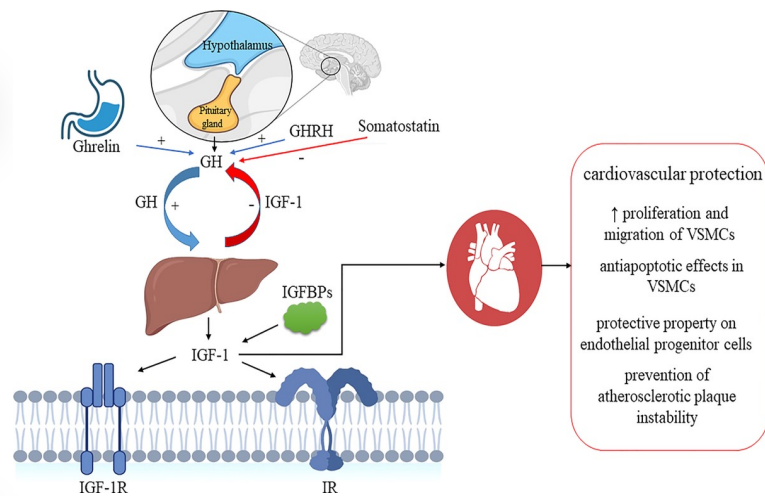
## WHAT IS IGF-LR3



- IGF1-LR3 stimulates the production of growth hormone (GH). As such, users replace fat with lean muscle which allows them to bulk up and improve muscle mass.
- Human insulin-like growth factor 1 long arginine 3 (IGF-1 LR3) protein is a synthetic analog for IGF-1. The substitutions include an arginine substitution and an N-terminal protein extension. Consequently, IGF-1 LR3 has improved biological potency and extended half-life. IGF-1 LR3 can be used for the consistent, reproducible maintenance of human pluripotent stem cells.

## BENEFITS OF LARAZOTIDE?

- Increase Fat Loss
- Aid in the development of lean muscle mass
- Add protection against muscle wasting
- Reduce inflammation



## POTENTIAL SIDE EFFECTS?



- Injection Site Reactions
- Swelling
- Low Blood Sugar
- Joint Pain
- Caution use for patients w/ cancer risk

## DOSAGE

- 01 Dosage Available: IGF-LR3 200mcg/mL (5mL Vial)
- 02 Inject 50mcg (25 units) SQ 5 of 7 days weekly at bedtime on an empty stomach



# MK-677 (IBUTAMOREN)

## WHAT IS IBUTAMOREN?



→ Ibutamoren is an **ORALLY** bioavailable, small molecule, non-peptide growth hormone secretagogue (GHS). Upon administration, ibutamoren promotes the release of growth hormone (GH) from the pituitary gland by acting on ghrelin, thereby increasing plasma GH levels.

## BENEFITS OF CJC 1295/IPAMORELIN?



- Improved physical performance
- Increased muscle mass
- Increased bone density
- Improved sex drive
- Neuroprotection
- Improved cognition and memory
- Increases IGF-1
- Energy levels also seem to be improved when using the combination.
- Helps promote deep wave REM sleep



## POTENTIAL SIDE EFFECTS?



- Edema/Swelling
- Increase in Hunger
- Joint Pain



## DOSAGE

01

Dosage Available: MK-677 (Ibutamoren)  
25mg Oral Capsules

02

Tk 1 capsule po at bedtime on an empty stomach, may cycle 90 days on and 30 days off





# MOTS-C

## WHAT IS MOT-C? +

MOT-C peptide is a short bioactive peptide that has garnered attention in the field of metabolic research, especially for its potential effects on energy regulation and longevity. MOTS-C holds great potential as a target to treat metabolic signaling issues by regulating muscle and fat physiology, and perhaps even extend a healthy lifespan. MOTS-C is a 16-amino acid peptide encoded within the 12S rRNA region of mtDNA. It is measured in plasma and multiple tissues including muscle, brain and liver. MOTS-C levels are correlated with insulin resistance in lean, not obese, individuals. MOTS-C is also involved in bone and cardiovascular health.

## DOSING? +

→ **MOTS-C 2.5mg/mL (5mL)**

Inject 2.5mg (25units), SQ 2x per week, can go up to 5mg

## ADVERSE EFFECTS? +

Injection site reactions

**\*\*\*Monitor Folate/Homocysteine Levels OR supplement with OTC Folate 1200mcg Daily**

## BENEFITS OF MOT-C +

Metabolic regulation/weight loss

Exercise Mimetic

Anti Aging Properties

Helps Mitochondrial Dysfunction

Anti Inflammatory





## WHAT IS NAD+?



- NAD+ is a vital coenzyme involved in various metabolic processes, playing a central role in energy production, DNA repair, and cellular communication.
- NAD+ levels naturally decline with age, which has been linked to decreased cellular function and the aging process

## BENEFITS OF NAD+?



- Boosts energy levels and combats fatigue
- Enhances cognitive function and mental clarity.
- Supports healthy aging by maintaining optimal cellular function.
- Improves muscle recovery and physical performance.
- Promotes healthy skin by aiding in tissue repair and regeneration.
- Supplements addiction recovery.
- Assists in weight management.
- Supports pain management.
- Improves mood- boosts serotonin.

## POTENTIAL SIDE EFFECTS?



Nausea  
Brain fog  
Cramping during therapy  
Redness, swelling at site  
Bruising at injection site

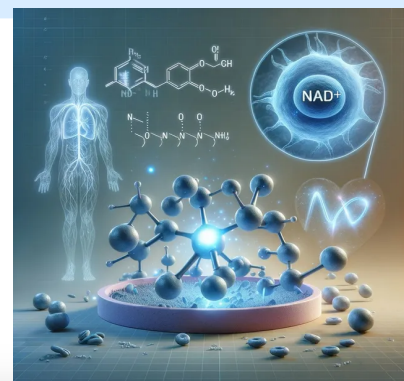
Headaches  
Phlebitis (rare)  
Fatigue  
Diarrhea  
Abdominal pain

## WARNINGS:



People with a history of bipolar disorder, psychosis, or suicidal thoughts.

Additionally, people with a known allergy to NAD or its components should not receive NAD therapy.



## DOSAGE

01

100mg/mL MDV (10mL)  
Inject 33 units SQ 3x weekly





# SEMAX

## WHAT IS SEMAX?

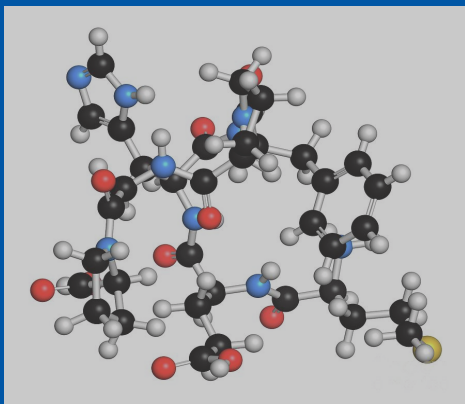


Semax is a powerful nootropic and neuroprotective peptide known for its ability to enhance cognitive function, improve memory, and protect the brain from damage due to stroke or neurodegenerative diseases. By increasing BDNF levels and modulating neurotransmitters, it promotes learning, mood enhancement, and mental clarity while offering significant protection for neurons. Semax is widely used for cognitive enhancement, stress reduction, and neurological recovery with minimal side effects. Its primary administration method is via a nasal spray, making it convenient for regular use.

## BENEFITS OF SEMAX



- Cognitive enhancement Neuroprotection
- Mood enhancement and stress reduction
- Treatment for neurological conditions
- Increased attention and focus
- Stroke Recovery
- Traumatic brain injury (TBI)
- Cognitive impairment
- ADHD



## POTENTIAL SIDE EFFECTS?



- Injection site erythema*
- Rash*
- Edema*
- Joint and muscle pain*

## WARNINGS:



- Reported safe in recommended dosages.*
- Safety in pediatrics not established.*
- Reported to have more sedative activity than selank.*
- Closed/sealed can be stored outside fridge for up to 4 weeks.*
- Open can be stored outside fridge for 2 weeks.*

## DOSAGE

01

10mg/mL (5mL) 1 spray each nostril 1x daily for cognitive improvement, general neuroprotection, anxiety



# SERMORELIN/IPAMORELIN

## WHAT IS SERMORELIN/IPAMORELIN? +

Sermorelin and Ipamorelin are both peptides that stimulate the release of growth hormone (GH) from the pituitary gland, but they function through different mechanisms and are often used together for synergistic effects in growth hormone therapy. In conclusion, combining Sermorelin with Ipamorelin offers a powerful and balanced approach to naturally boosting growth hormone levels, making it beneficial for individuals looking to enhance muscle growth, fat loss, recovery, and overall health, particularly as they age.

## POTENTIAL SIDE EFFECTS? +

Injection site reactions

Some patients may develop anti GRF antibodies at least once during treatment.

Prohibited by use in athletics

## BENEFITS OF SERMORELIN/IPAMORELIN +

- Regeneration + wound healing
- Improved energy
- Muscle growth, strength, maintenance
- Reduced risk of cardiovascular disease
- Improved bone density
- Anti-aging- skin quality + collagen density
- Improved Sleep
- Cognitive/Neurodegeneration Support
- Improved libido
- Improve athletic performance

### Sermorelin Monotherapy Dosing

Inject 20 units SubQ QD before bed

### Sermorelin/Ipamorelin 3mg-2mg/mL (5mL)

Inject 15 units SubQ QD before bed

### AVAILABLE DOSAGE FORMS:

01 Sermorelin Monotherapy 3mg/mL (5mL)

02 Sermorelin/Ipa 3mg-2mg/mL (5mL)



# TESAMORELIN/IPAMORELIN

## WHAT IS TESAMORELIN/IPAMORELIN?

- CJC 1295 is a growth hormone releasing hormone (GHRH) analogue = Growth hormone mimetic
- Stimulates pituitary endogenous GH (growth hormone)
- Increases endogenous IGF-1 (insulin-like growth factor-1)

## BENEFITS OF TESAMORELIN/IPAMORELIN +

- Improved physical performance
- Increased muscle mass
- Weight loss support
- Anti-Aging - improves skin elasticity
- Improved recovery from exercise and injury
- Decreases triglycerides
- Cardiovascular support
- Improved axonal repair + regeneration after nerve injury
- Improved cognition and memory
- Reduces visceral fat in HIV patients with lipodystrophy
- Improves Growth Hormone levels w/ minimal effects on ghrelin, prolactin, ACTH and cortisol
- Increases IGF-1
- Energy levels also seem to be improved when using the combination.
- Helps promote deep wave REM sleep

## POTENTIAL SIDE EFFECTS? +

- Flushing
- Edema
- Injection site reaction
- Joint and muscle pain
- Rash

## WARNINGS: !

Tesamorelin/Ipamorelin contraindications:  
Hypersensitivity to any component of product.  
Pregnancy  
Pituitary conditions including disruption of HPA axis.  
Existing head trauma  
Growth Hormone may be mitogenic;  
if patient prone to cancer or has cancer, use with caution

## DOSAGE

01

Dosage Amount: Tesamorelin/Ipamorelin  
3mg-.3mg/mL (10mL MDV)

Inject 33 Units SubQ Daily at bedtime on an empty stomach



# TESOFENSINE

## WHAT IS TESOFENSINE? +

→ Tesofensine is a triple reuptake inhibitor initially developed for neurological disorders. It has shown promising results in weight loss, outperforming current medications. This presentation explores its mechanisms, efficacy, and potential impact on obesity treatment.

## DOSING? +

→ **1mg capsule**

Take 1 capsule daily

## ADVERSE EFFECTS? +

❖ Common side effects of tesofensine include nausea, headache, dizziness, insomnia, constipation, dry mouth, and increased heart rate.

## BENEFITS OF TESOFENSINE? +

### ❖ Serotonin Reuptake Inhibition.

Enhances mood and reduces appetite.

### ❖ Noradrenaline Reuptake Inhibition.

Increases energy expenditure and fat oxidation.

### ❖ Dopamine Reuptake Inhibition.

Improves motivation and reduces food cravings.



# GLUTATHIONE

## WHAT IS GLUTATHIONE? +

Your cells contain glutathione, a substance made from three amino acids: cysteine, glutamate, and glycine.

Glutathione acts as an important antioxidant in your body. That means it helps combat free radicals, molecules that can damage your body's cells.

Glutathione plays a role in many chemical reactions in your body. It also helps detoxify chemicals, including some that your body creates naturally, as well as pollutants and drugs. It also improves insulin sensitivity!

Your supply of glutathione seems to drop as you get older, possibly because your body can't create as much. Lower glutathione levels seem to go hand-in-hand with poorer health. For instance, lower levels may play a role in many conditions that are more likely to develop in older people.

Your glutathione levels may also fall if you have certain conditions, such as:

- Cancer
- HIV/AIDS
- Type 2 diabetes
- Hepatitis
- Parkinson's disease

## DOSING? +

→ Inject 100 units weekly subcutaneously

## ADVERSE EFFECTS? +

- ❖ Low Glutathione Symptoms  
If you don't have enough glutathione in your body, you might notice symptoms such as: Fatigue, Brain fog, Sleep problems, Frequent infections, Anemia (low red blood cell count), Loss of coordination.

## BENEFITS OF GLUTATHIONE? +

1. **Antioxidant Support:**Glutathione is a powerful endogenous antioxidant crucial for neutralizing free radicals and oxidative stress. Oral glutathione supplementation is explored as a means to augment the body's antioxidant defenses, potentially mitigating oxidative damage.
2. **Cellular Detoxification:**Glutathione plays a central role in cellular detoxification by aiding in the removal of harmful substances, including environmental toxins and medications. Oral glutathione is considered a potential support for the body's natural detoxification processes.
3. **Immune System Modulation:**Glutathione is involved in immune system regulation, supporting the proper functioning of immune cells. While the direct impact of oral supplementation on immune function is an area of ongoing research, maintaining optimal glutathione levels may contribute to immune health.
4. **Skin Health and Aging:** Some studies suggest a connection between glutathione levels and skin health. Oral glutathione has been explored for its potential role in promoting skin brightening and reducing the effects of aging, although more research is needed to establish its efficacy in these areas.
5. **Respiratory Health:** Glutathione is present in the respiratory tract and is implicated in lung health. Oral glutathione supplementation has been investigated as a potential supportive measure for respiratory conditions, including asthma. However, the evidence in this area is not yet conclusive.





# BIOBOOST PLUS

## WHAT IS BIOBOOST PLUS? +

→ Bioboost is a once-weekly injectable that contains B12 and three amino acids (methionine, inositol, and choline- MIC). These amino acids help transport fat into the cell to be used for energy. Patients report bioboost helping with both energy and getting them out of a plateau.

Bioboost Plus includes B12, MIC, B6, B5, Carnitine and Arginine

## DOSING?

Injections: 100 units once to twice weekly

## CONTRAINDICATIONS? +

❖ Sulfa allergy- methionine

## STORING GUIDELINES +

Store in cool, dry place. Does not need to be refrigerated but can for convenience. Most patients will allow the medication to warm to room temperature before injecting for more comfort.



# Retatrutide

## WHAT IS Retatrutide?



→ Retatrutide executes its therapeutic effects by leveraging a broader hormonal response. It aims at multiple receptors, including those for GLP-1, GIP, Glucagon, and others related to energy balance. This multi-receptor approach is anticipated to not only help with blood glucose regulation and appetite suppression but also provide broader metabolic benefits.

## DOSING?



→ Concentration: 8mg/ml(2ml-20ml)

Once weekly injection:

Dosing schedule:

Month 1: 1mg/week

Month 2: 2mg/week

Month 3: 3mg/week

Month 4: 4mg/week

Month 5: 5mg/week

Months 6+: 6mg/week up to 12mg/week as needed.

## ADVERSE EFFECTS?

❖ well tolerated but as any GLP1-  
nausea, constipation

## BENEFITS OF TESOFENSINE?

❖ Clinical phases have shown Retatrutide to outperform Semaglutide and Tirzepatide



## Pricing

- AOD 9604: 500mcg troche. \$250/30 troche, \$400/60 troche, \$600/90 troche
- 5-Amino 1MQ: Oral capsules \$250/30 capsules, \$500/90 capsules
- BPC157: Oral capsules \$200/30 capsules, \$400/90 capsules, Injectables \$325/1 month, \$800/3 months
- CJC1295/Ipamorelin: Injectables \$300/10 weeks, \$800/30 weeks
- DiHexa: Oral capsules \$275/30 capsules, \$650/90 capsules
- GHK-CU: Scalp foam \$250/1 month, Topical cream \$250/1 month, Injectable \$250/1 month, \$650/3 months
- IGF-LR3: \$800/ 3 months
- MK-677(Ibutamoren): \$225/30 capsules, \$600/90 capsules
- MOTs-C: \$425/10 weeks
- NAD+: Injectable \$175/10 weeks
- Selank: Nasal Spray \$250/1 month
- SEMAX: Nasal Spray \$225/1 month
- Sermorelin: Injectable \$300/10 weeks
- Sermorelin/Ipamorelin: Injectable \$275/1 month, \$500/2 months
- Tesamorelin/Ipamorelin: Injectable \$350/1 month, \$675/2 months
- Tesofensine: \$300/30 capsules, \$800/90 capsules
- Glutathione: Injections: \$150/10mL (10 weeks), \$300/30mL (30 weeks)
- Bioboost Plus: \$150/10ml (10 weeks), \$300/30ml (30 weeks)
- Retatrutide: \$500/16mg, \$800/32mg, \$1000/48mg, \$1500/64mg, \$1750/80mg, \$3000/160mg